

**TraFFix  
Devices Inc.**



**URBANITE™**



Urbanite with ADA Compliant legs



**57000U-O**

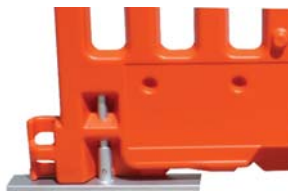
Orange Urbanite Pedestrian Barricade

**57000U-W**

White Urbanite Pedestrian Barricade

### **Ideal for Crowd Control and Pedestrian Safety**

- Two legs deploy quickly for fast set-up. Leg turns parallel to wall for storage and stacking.



The Blow Molded Connectors Provide Strength and Flexibility

- Made of UV stabilized, high density polyethylene, the linkable Urbanite™ Walls quickly and easily link together in 6 foot sections to allow flexibility in creating a safe pedestrian pathway or a barrier separating spectators from your event.
- Weighing only 23 lbs., the durable double walled, non-flexible, yet lightweight design makes the Urbanite easy to lift on and off the truck and easy to connect.
- The ten molded-in vertical windows reduce wind load, add strength and stability, and reduce overall weight of the Urbanite.
- Two recessed areas measuring 8" wide x 53" long on each side of the Urbanite accommodate sponsorship or advertising of your event.
- Standard colors are orange and white. Custom colors also available upon request.
- The Urbanite is available with the optional Step-N-Deploy leg set for ADA Compliant applications.



[www.traffixdevices.com](http://www.traffixdevices.com)

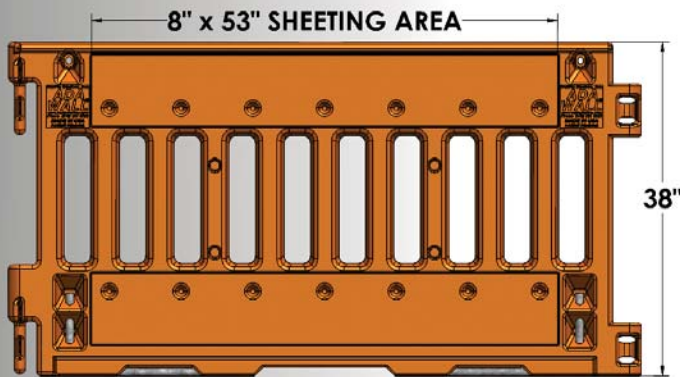
# URBANITE™



Continuous Ergonomic Handrail Provides a Comfortable and Secure Guide Through the Work Zone

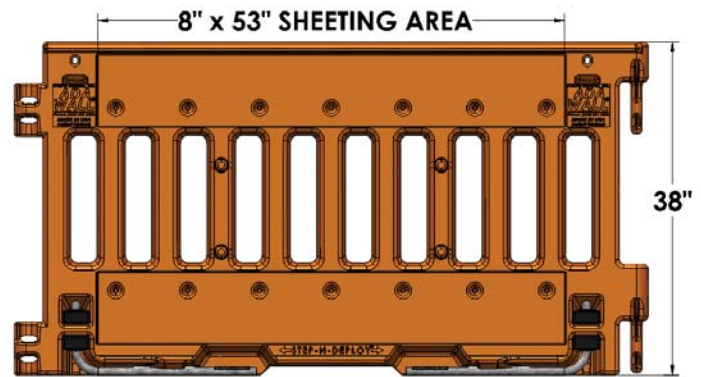
## Specification:

The Urbanite barricade wall shall not exceed 38" in height, will be 72" in length and 3" thick. Total weight will not exceed 23 lbs. The ADA wall shall be made of high density UV stabilized polyethylene and is available in standard colors of orange or white. The top surface of the barricade wall will provide a smooth continuous ergonomic hand rail. The pedestrian side of the wall shall have a smooth lower surface to allow for sight impaired cane tapping. The male and female linkable connectors will be blow molded to increase strength and flexibility. Each wall will have 10 molded-in vertical windows for improved wind load performance and visibility for guide dogs. For ADA compliant applications, two tubular galvanized steel Step-N-Deploy legs will be in the bottom of each wall. The legs will be deployable with the toe of a boot. Both sides of the wall will have two each, 8" x 53" recessed area for reflective sheeting. The bottom of the wall will have openings to allow for water passage. Each wall will have two receiver holes and two shelves to support the attachment of barricade lights. The shelves will minimize the rotation of the barricade lights. Four molded-in stacking lugs will be on the street side of the barricade and 4 molded-in receiver holes will be on the pedestrian side of the barricade to allow for stacking for transport and storage.



**FRONT**

*Shown with ADA compliant leg set*



**BACK**

<b>WEIGHT:</b>	23 pounds
<b>HEIGHT:</b>	38 inches
<b>LENGTH:</b>	72 inches
<b>WIDTH:</b>	3 inches
<b>MATERIAL:</b>	UV stabilized polyethylene



Locations for Two Barricade Lights



Protect Pedestrians From Work Zone Hazards



Four Molded-In Stacking Lugs for Secure Transport and Storage

**TraFFix  
Devices Inc.**



160 Avenida La Pata, San Clemente, CA 92673  
(949) 361-5663 FAX (949) 361-9205  
www.traffixdevices.com

Distributed by:

Gonneville Inc.

211 Calle Pinteroesco Suite A

San Clemente, CA 92672

877-246-8015 sales@gonneville.com